



W-H reminds members it is dangerous and illegal to tamper with meters

Wright-Hennepin would like to remind members that tampering with electric meters is not only dangerous, but is also against the law.

While it is not common, a small percentage of members do occasionally try to steal electricity by tampering with electric meters. Tampering includes opening the electric meter and re-wiring it to bypass the meter in an attempt to not have electricity flow monitored by the meter. Another form of tampering is re-connecting electricity after the cooperative has disconnected the meter due to insufficient payment. It is illegal to tamper with meter seals.

"Members need to realize the dangers of opening up meters," said Brent Morningstar, W-H's vice presi-

dent of community and environmental services. "Without the proper equipment or expertise, members can potentially harm themselves and damage or destroy the meter socket and service. It is costly to the homeowner for repairs and it is costly to the cooperative because it is a criminal act of stealing."

W-H members who tamper with their meters are prosecuted according to Minnesota State Law (Section 609.52, Minnesota Statutes). Members who are prosecuted must also pay the amount the cooperative estimates is due for service rendered, replacements/repairs, as well as the costs for inspection, investigation and protective installation resulting from tampering.

Plenum heaters and Off-Peak can help save money on heating bills

Are you interested in saving money on your heating bills? An electric plenum heater coupled with Wright-Hennepin's (W-H's) stable Off-Peak electric rate can save you money on the cost of heating your home each winter. W-H's Off-Peak rate of 3.4 cents per kWh is competitive and often lower than fossil fuel sources. For example, if you have a 90 percent or higher efficiency propane furnace W-H's Off-Peak rate is the equivalent to paying 82¢ per gallon for

propane. If you have a 90 percent or higher efficiency natural gas furnace, W-H's Off-Peak rate is the equivalent to paying 90¢ per therm for natural gas.

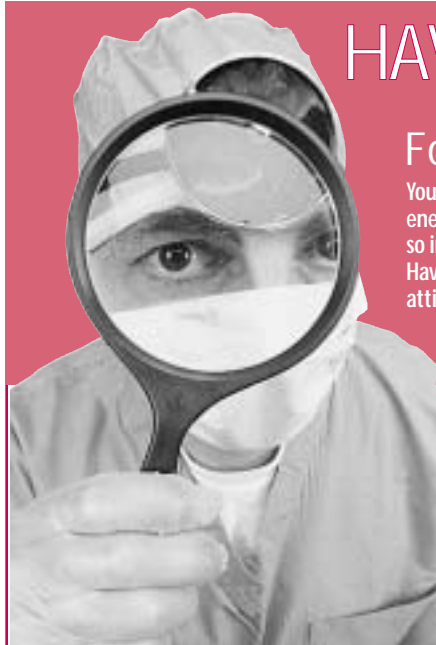
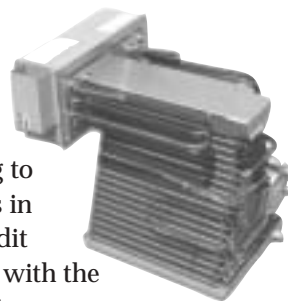
Plenum heaters can be installed in new or existing ductwork and can be used with most fossil fuel furnaces. Plenums allow you to change your fuel source from electric to a fossil fuel at the flip of a switch.

In addition to the low heating rate, W-H offers low interest

financing to members in good credit standing with the cooperative.

Starting at just \$650, plenum heaters are easy to install, efficient, and give more control over heating bills all winter long.

Financing is available for qualified members. For more details on plenum heaters, call W-H at 763-477-3000 or 1-800-943-2667.



HAVE YOUR ATTIC INSPECTED

For proper insulation

Your home could be letting hundreds of dollars in energy costs slip through the cracks. That's why it's so important to have your home properly insulated. Have one of our insulation experts inspect your attic today!



W-H Response can also help you prepare your home for the cold weather with:

- Gas or electric furnace tune-ups • Furnace safety checks
- Gas or electric furnace replacements • A variety of electric heating products, including electric radiant floor heat • Duct cleaning and more!

W-H Response

A Division of Wright-Hennepin Cooperative Electric Association

763-477-3000
1-800-943-2667

Industry NEWS

GRE receives international environmental certification

Great River Energy (GRE), Wright-Hennepin's (W-H's) primary power supplier, recently received an international environmental certification for one of its peaking plants. Lakefield Junction Station is a natural-gas fired peaking plant in Trimont, Minn.

"Great River Energy is the only generation and transmission cooperative in the U.S. with ISO 14001 certified facilities. This is a significant demonstration of our commitment to being an environmentally responsible company," said Mary Jo Roth, manager of environmental services at GRE.

The International Organization for Standardization (ISO) 14001 certification is a voluntary international standard for excellent environmental practices. It requires that a company continuously evaluate and improve its environmental performance.

BPL has capability to be faster

Penn State engineers have developed a new model for high-speed Internet transmission over U.S. overhead electric lines and estimates the lines can provide speeds that far exceed DSL or cable over similar spans.

"We've run computer simulations with our new power line model and found that, under ideal conditions, the maximum achievable bit rate was close to a gigabit per second, per kilometer ...much higher than DSL and even cable," said Dr. Mohsen Kavehrad, the W. L. Weiss professor of electrical engineering and director of the Center for Information and Communications Technology Research.

BPL pilot projects are being done across the country and are proving to be successful. With BPL, consumers simply plug into a wall socket using a special adapter that is available at most electronics stores. Be sure to visit W-H Link's booth at the annual meeting March 22 for information regarding the status of BPL projects across the country.

Electricity was top concern for Iraqi voters

When millions of Iraqis voted in January they also elected local assemblies in hopes of getting something far simpler: electricity. And they're threatening to flex their newly acquired voting muscle, saying if the government doesn't fix the electricity by the end of the year - when the next election will be held - they'll be ready to vote them out.

"We gave them (the interim government) an excuse because they didn't have the authority. But if the people vote for them, that means they are legitimate," said Adnan Mehdi Shaed, 36, of Najaf.

Electricity is so sparse in Iraq that some places get it only for an hour a day. Parts of Najaf have no electricity at all. Those who can afford generators, which run on gas, have bought them. But the lines to get gas stretch for miles, and the wait can be so long that some people spend the night in cars.